

IMAGE RESIZING USING PHOTOSHOP CS

Images should be flattened (no layers) and saved as jpegs.

When saving in this format remember to work in the 8 bit mode for your images.

We will leave the compression at no less than 8 – about 10 is fine.

Resolution of 300 pixels per inch

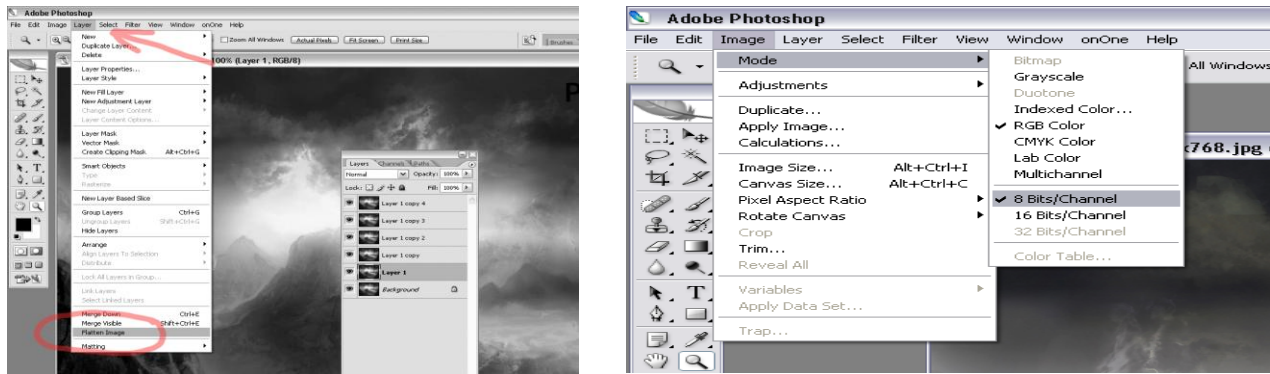
Each image should be 1400 pixels wide X 1050 (or in proportion) for landscape mode.

Portrait mode the max height is 1050 pixels with whatever size forms the width of your image.

Your Image is now in a worked on state and finalised.

How do you flatten your images?

Go to “Layer” select “flatten image” this will flatten all your layers into one called “Background”



How do you select 8 bit mode?

Go to “Image” select “Mode” select “8 bits per channel” and there should be a tick alongside. Leave alone if ticked already.



How do you create the Image Size required?

Go to “Image” select “Image Size” and a new window opens.

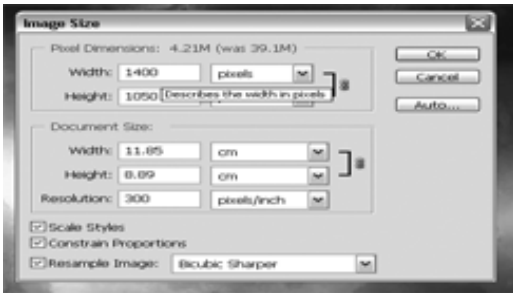
Scale Styles: box should be ticked

Constrain Proportions: box must be ticked

Resample Image: *Bicubic sharper* should be selected

Document Size: Do not alter any dimensions here

ALTER RESOLUTION FIRST BEFORE ALTERING PIXEL DIMENSIONS



Resolution: Select 300 if you wish but not less than 72 ppi

Pixel Dimensions: Width 1500 X (in proportion) or 1050 max. for landscape format.

Pixel Dimensions: Height 1050 X (in proportion) for portrait format

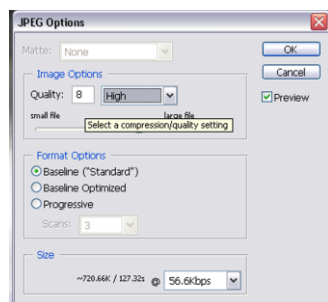
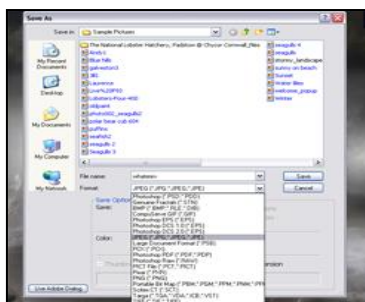
Now save as a jpg?

Go to “File” select “Save As” a new box will pop up select “JPEG (*.JPG,*.JPEG,*.JPE)” enter your file name. Remember to choose the folder where you image is saved to.

“Save In” > (my landscapes) for example.

Another box will pop up to choose the compression rate?

Select “Image Options” then select “Quality” enter a value of 10 (go no lower than 8) and set to “High”



JOB DONE!